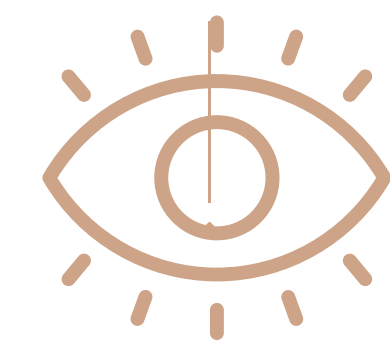


PAREKLISSIA HAS A NEW PROJECT

RC International for Trading & Construction, a visionary in the world of real estate development with an experience of over 20 years sets out a vision to expand with a new development, "**Ranalda**".



With a desire towards excellence, the company's vision is to pursue growth through exceptional customer service, spectacular designs, and a keen dedication towards timely – delivery.





TAP FOR THE
LOCATION

DESTINATION

Our aim, is to always create an integrated experience of *lifestyle and convenience* throughout a journey of what is supposed to be one of the *most vital decisions in one's life*.

Famous for its charm and serenity with just five minutes away from the Mediterranean Sea, Pareklissia is surrounded by so much greenery, beautiful restaurants, and most importantly very easy and safe roads.

A CELEBRATION OF SIMPLE LUXURY LIVING



Pareklissia Gardens

A CELEBRATION OF SIMPLE LUXURY LIVING

THE DESIGN

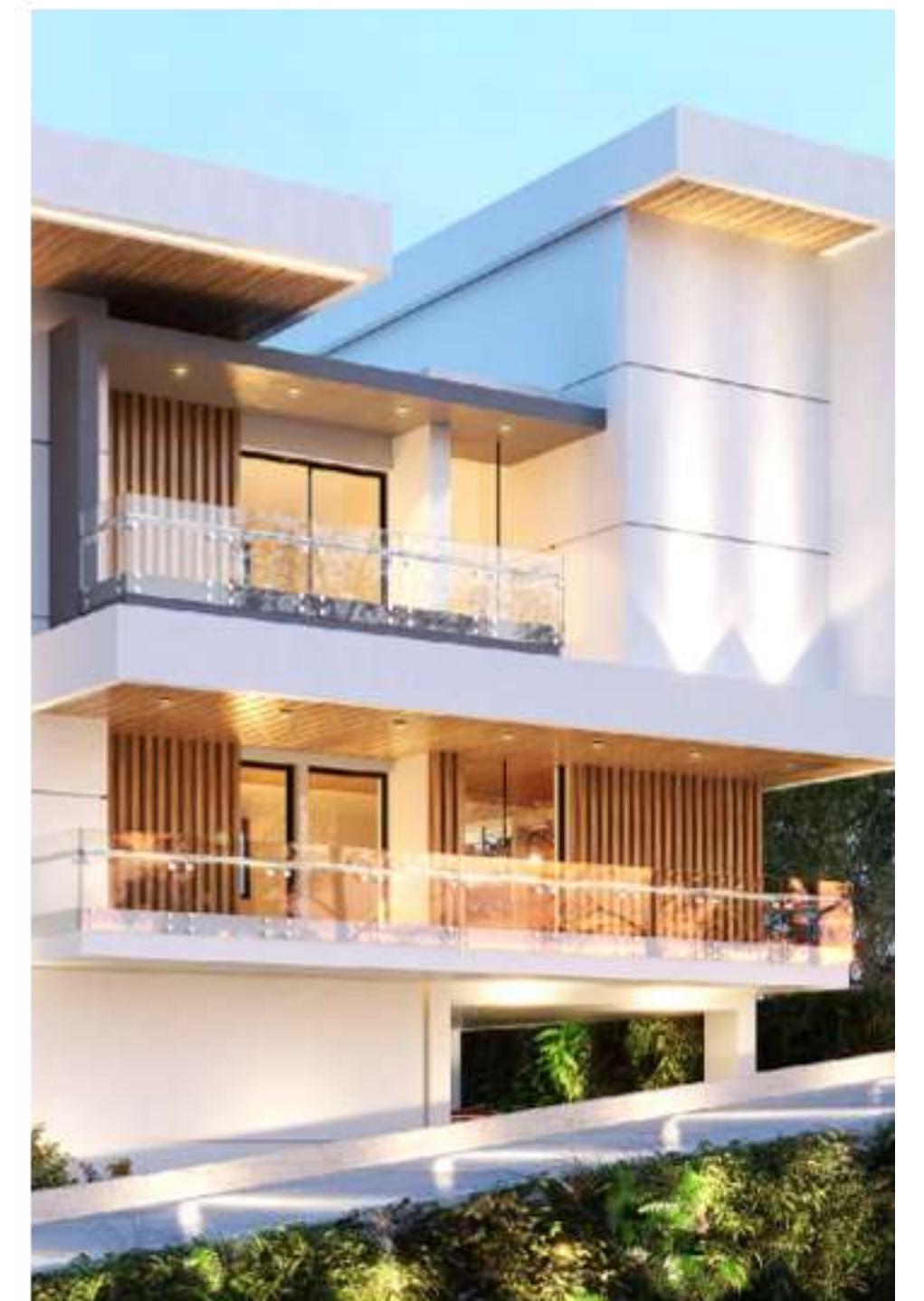


Carefully devised with the utmost originality, the new gated residence is beautifully composed of:

- . 3 Striking Villas
- . An Enchanting Building

All designed to resonate a theme of elegance, comfort and aspiration through one development, "Ranalda".

"Ranalda", is cautiously composed to make sure that *harmony, spaciousness, impeccable quality, and exceptional design* are not just factors of design, but also factors of peace-creation in the making.





Units & villas are spaciouly and uniquely designed with the utmost care to provide a feel of ease and luxury to our residents.

CELEBRATION OF
SIMPLE LUXURY
LIVING

SUSTAINABILITY



With a keen consideration towards valued sustainability, Ranalda maintains an energy efficient relation with ***the ecosystem through harvesting local energy sources.***

PROJECT COMPONENTS THE BUILDING

A building of **10 apartments** lavishly designed with the utmost care offering a sense of complimentary feel to the gated residence.

THE BUILDING



TEN APARTMENTS

- ◆ 5 TWO BEDROOM APARTMENTS
- ◆ 1 PENTHOUSE (TWO BEDROOM)
- ◆ 5 ONE BEDROOM APARTMENTS
- ◆ TWO PENTHOUSES (ONE BEDROOM)

LUXURIOUS ENTRANCE

- ◆ Each apartment has its own storage room
- ◆ Dedicated parking for each apartment

2^A STANDALONE VILLA

A standalone villa, with an area of over **150m²**, is a just a breakthrough with its carefully considered facades.

It is a combination of exceptional elements all coming together to form a feel of harmony and minimalism.

THE STANDALONE VILLA



COMPONENTS

- ◆ Master Bedroom
- ◆ 2 Bedrooms
- ◆ Open Plan Kitchen
- ◆ Covered Verandas
- ◆ Roof Garden
- ◆ Storage Room
- ◆ Private Garden
- ◆ Dedicated Parking (2)
- ◆ Covered Parking

3 TWO SEMI-DETACHED VILLAS

Two semi-detached villas resembling beauty and art at the same time. These two villas, with an area of over **145m²** are what completes the gated residence to make it one of the most distinguished projects in the area.

TWO SEMI-DETACHED VILLAS



COMPONENTS

- ◆ Master Bedroom
- ◆ 2 Bedrooms
- ◆ Open Plan Kitchen
- ◆ Covered Verandas
- ◆ Roof Garden
- ◆ Storage Room
- ◆ Private Garden
- ◆ Dedicated Parking (2)
- ◆ Covered Parking



GATED RESIDENCE



GREENERY



TERRACES



STORAGE AREAS



CCTV



PHOTOVOLTAICS



ROOF GARDENS



www.rcidevelopments.com

+357 9904 9444

C Y P R U S
67 Agias Fylaxeos, Drakos
Court 2nd Floor, Office
3025 Limassol - Cyprus



TAP FOR THE
LOCATION