

# EMERALDA TWO

DEFINING LUXURY LIVING IN ONE OF THE  
MOST PRESTIGIOUS AREAS IN LIMASSOL

MESA GETONIA  
LIMASSOL



+357 9904 9444

---

ANOTHER PROJECT BY RC







Facade Wide View





RANA LIDA PROPERTIES

Main Facade Entrance





Facade / Side View



HARVESTING  
LOCAL  
ENERGY RESOURCES

ENERGY +  
A

SUSTAINABILITY





# Project Components

## 9 Luxurious Apartments

- 6 One Bedroom Apartments
- 2 Two Bedroom Apartments
- 1 Two Bedroom Penthouse Apartment



Main Entrance View

GATED RESIDENCE

GREENERY

TERRACES

STORAGE AREAS

CCTV

PHOTOVOLTAICS

ROOF GARDENS



# DESTINATION PERKS

TWO MINUTES TO THE BEACH



2 minutes to the Mediterranean Sea.



1 minute to the tourist area full of superbly luxurious resorts and restaurants.



5 minutes to the heart of the city of Limassol.

A feel of complete serenity with a nice breezy weather.



# CONTEMPORARY DESIGN








# CONTEMPORARY DESIGN



A modern interior design scene featuring a kitchen with dark wood cabinetry and a marble backsplash, a dining area with a round table and blue chairs, and a living area with a large orange armchair and a round coffee table. The space is illuminated by track lighting and under-cabinet lights.

# CONTEMPORARY DESIGN

INTERIOR SPACES



A modern interior design scene featuring a dark wood bookshelf on the left with various decorative items including a small astronaut figurine, a vase of dried flowers, and a stack of books. A large, dark, minimalist television is mounted on the wall in the center. In the foreground, a round glass coffee table holds a stack of magazines, a vase of dried flowers, and a small geometric sculpture. To the right, a low wooden console table displays a large pink ceramic vase, a small geometric sculpture, and a candle. The background is a light-colored wall with a large window or glass partition on the right side.

# CONTEMPORARY DESIGN

INTERIOR SPACES





# CONTEMPORARY DESIGN

INTERIOR SPACES





# CONTEMPORARY DESIGN

INTERIOR SPACES



A modern bathroom interior featuring a white vanity with a large, round mirror above it. The vanity has a white countertop and a white sink. The mirror reflects a window and a shelf with folded towels. The wall is covered in marble tiles. To the right of the vanity is a toilet. The floor is made of large, light-colored tiles. The overall design is clean and minimalist.

# CONTEMPORARY DESIGN

INTERIOR SPACES





# CONTEMPORARY DESIGN

INTERIOR SPACES







# PLANS & DRAWINGS



AVAILABLE

APARTMENT 102 - ONE BDR

INTERNAL AREA = 50m2

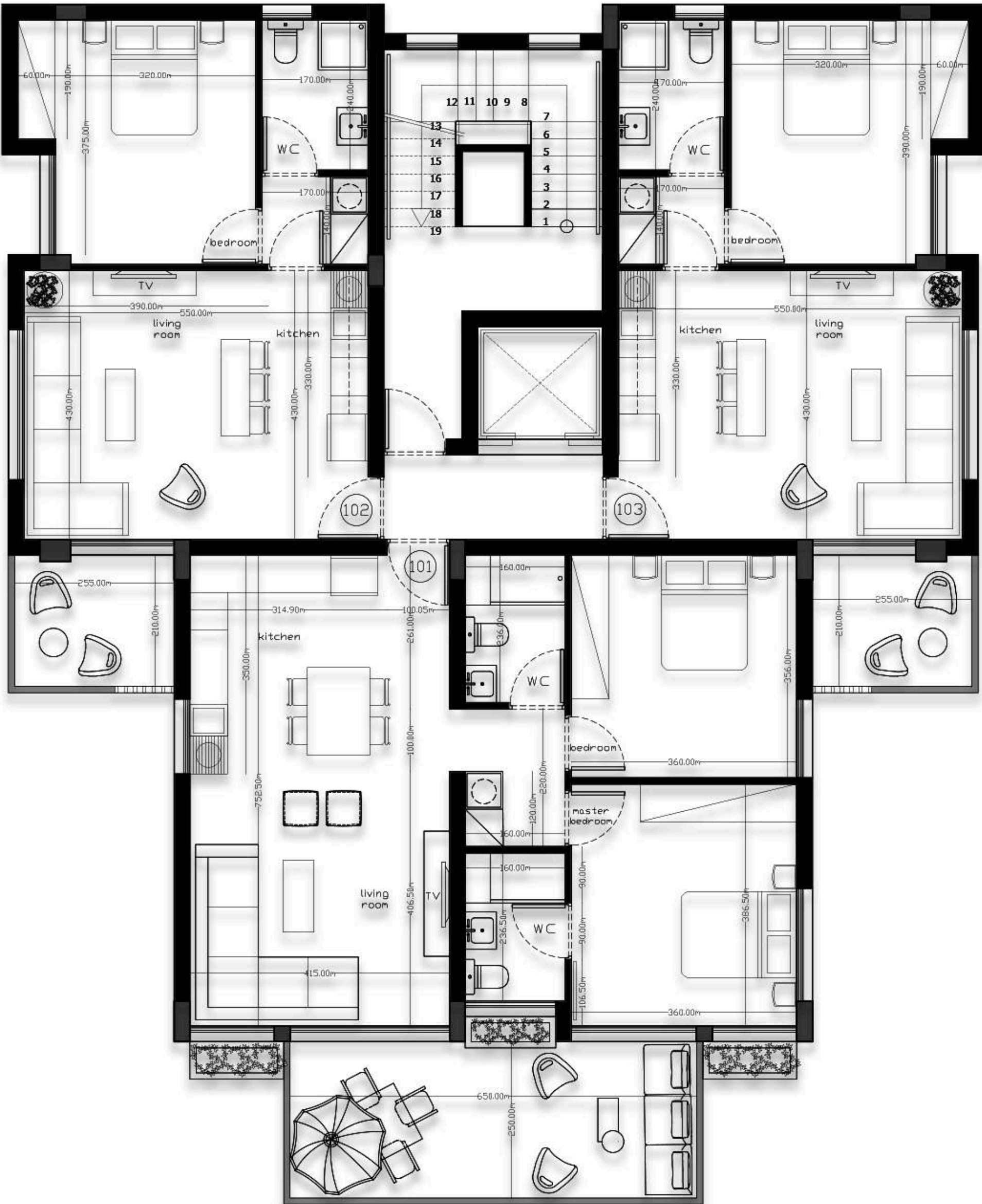
COVERED VERANDA = 6m2

AVAILABLE

APARTMENT 103 - ONE BDR

INTERNAL AREA = 50m2

COVERED VERANDA = 6m2



SOLD

APARTMENT 101 - TWO BDR

INTERNAL AREA = 80m2

COVERED VERANDA = 16.25m2

Emeralda 2  
First Floor



**SOLD**

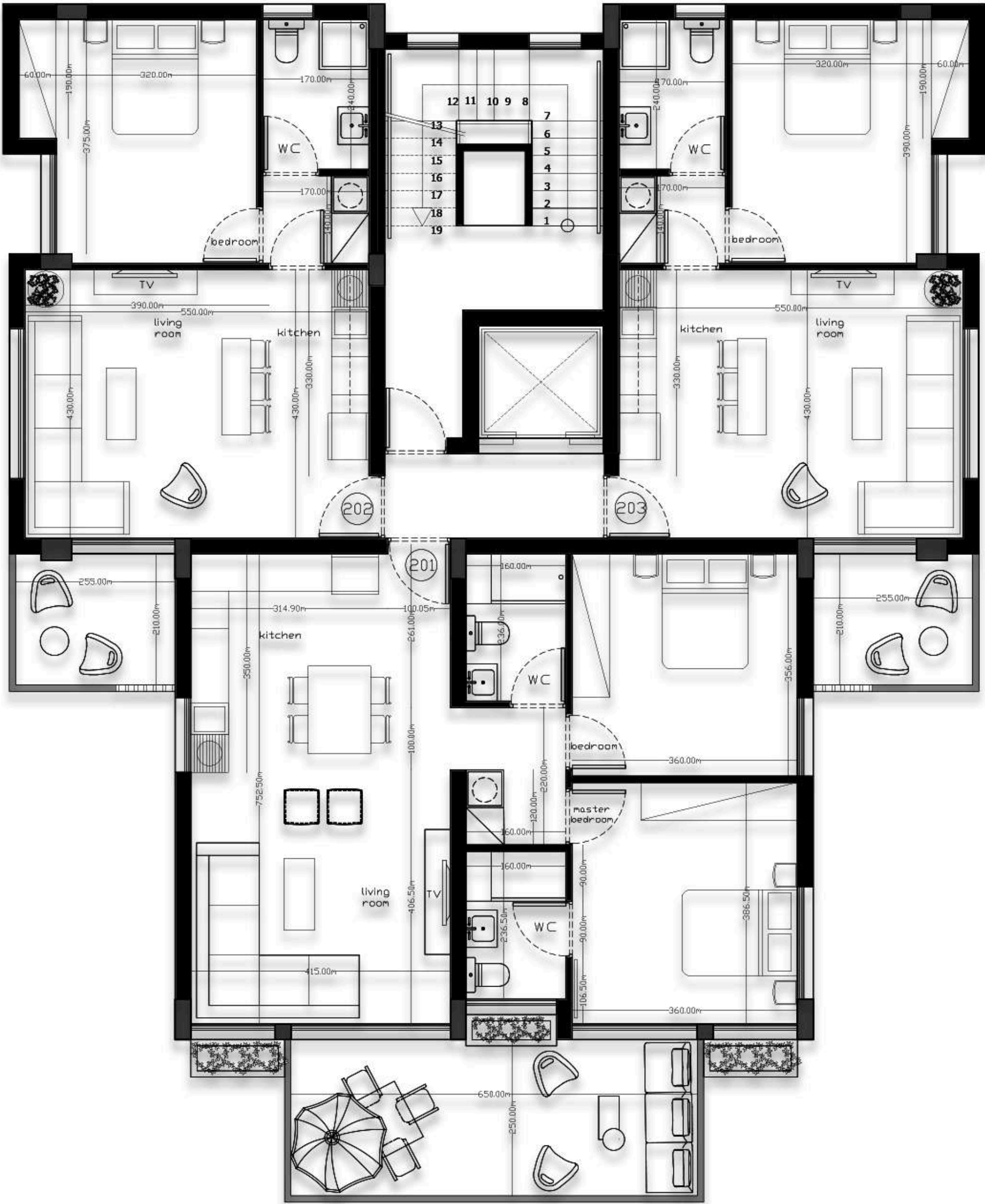
**APARTMENT 202 - ONE BDR**

**INTERNAL AREA = 50m2**  
**COVERED VERANDA = 6m2**

**SOLD**

**APARTMENT 203 - ONE BDR**

**INTERNAL AREA = 50m2**  
**COVERED VERANDA = 6m2**



**SOLD**

**APARTMENT 201 - TWO BDR**

**INTERNAL AREA = 80m2**  
**COVERED VERANDA = 16.25m2**

Emeralda 2  
Second Floor



**RESERVED**

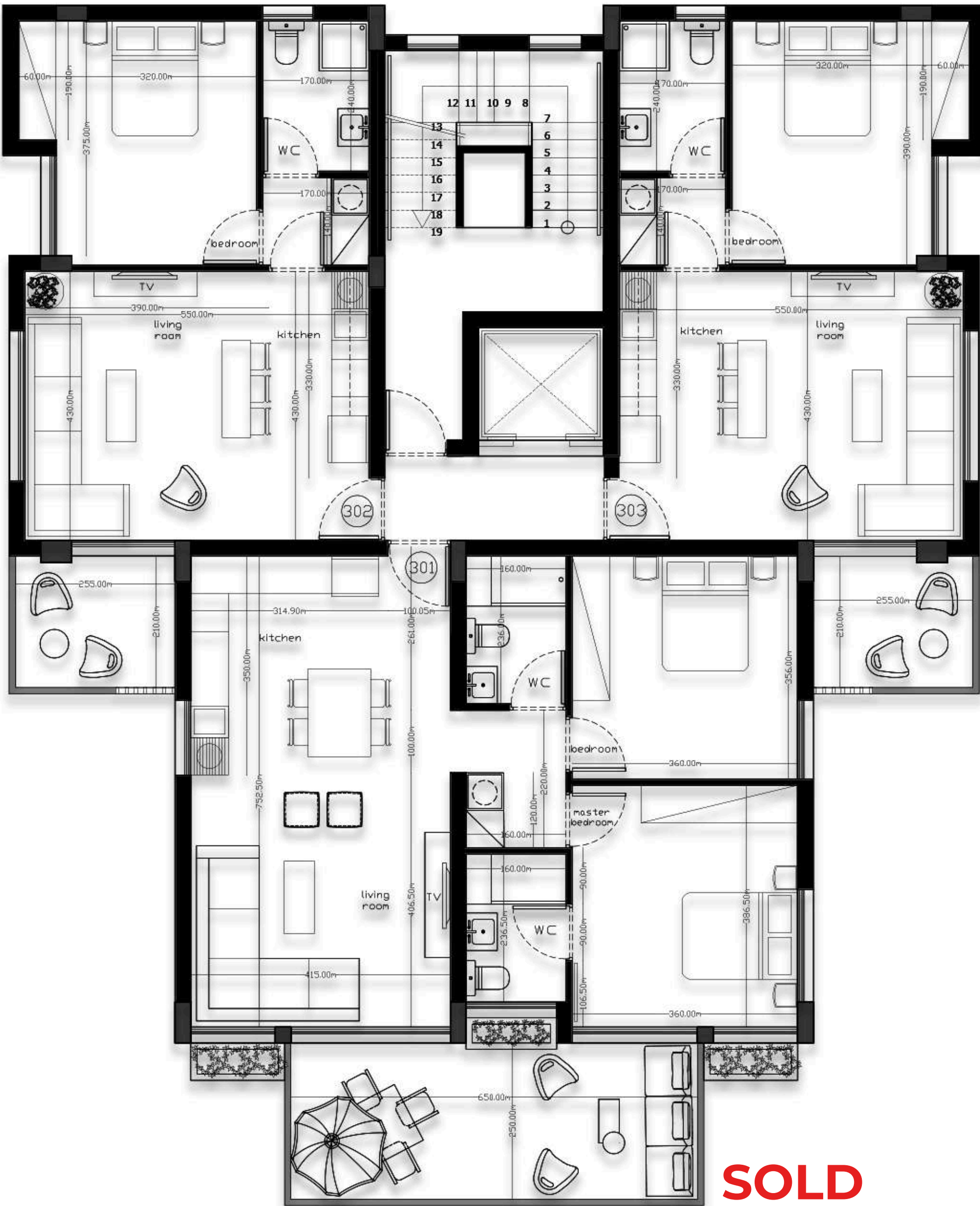
**APARTMENT 302 - ONE BDR**

**INTERNAL AREA = 50m2**  
**COVERED VERANDA = 6m2**

**AVAILABLE**

**APARTMENT 303 - ONE BDR**

**INTERNAL AREA = 50m2**  
**COVERED VERANDA = 6m2**



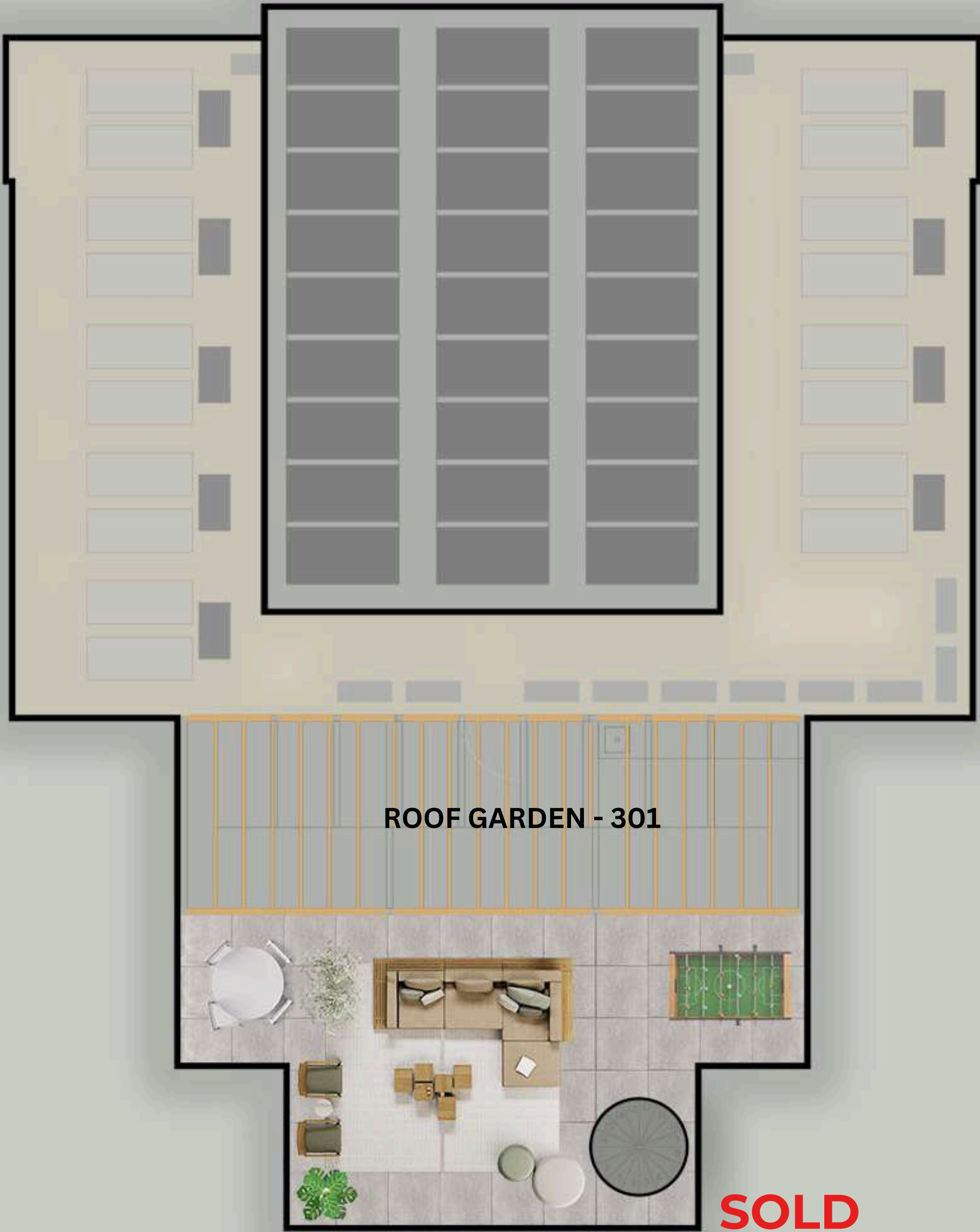
**SOLD**

**APARTMENT 301 - TWO BDR PENTHOUSE**

**INTERNAL AREA = 80m2**  
**COVERED VERANDA = 16.25m2**  
**UNCOVERED VERANDA = 60m2**



# ROOF FLOOR



60 SQM UNCOVERED VERANDA



# EMERALDA TWO

MESA GETONIA - LIMASSOL

ANOTHER PROJECT BY RC



CYPRUS  
67 Agias Fylaxeos, Drakos  
Court 2nd Floor, Office  
3025 Limassol - Cyprus

+357 9904 9444



TAP FOR THE LOCATION



RCIDEVELOPMENTS

All details in this brochure are indicative of final specifications and are subject to change. All illustrations and generated images are subject to change. The developer preserves the right to apply changes International & Ranalda Properties retains the copyright of all material in this brochure.

www.rcidevelopments.com